

MINERALS

Community Newsletter



January 2025 - Summer Edition



Inside this issue

SGM In the Community

- Community POP IN
- Stawell Show
- Community Grants

SGM Mining Community

- Safety Awards
- Epiroc Partnership
- Mine Rescue Competition
- Schools Program
- SUPL updates

Mine Development

- Blasting Activity



Front cover image courtesy of Epiroc Australia Pty Ltd - New SGM Simba E70 S production drill rig in action underground

SGM in the Community

Community POP IN

During the last week of July 2024, our SGM Engagement team hosted a Community POP IN information session alongside "Our Story of Gold" an historic photography and art exhibition.

The sessions and exhibition provided the community with the opportunity to ask questions and gain insights into various aspects of Stawell Gold Mines activities, including updates on mining developments, regional exploration projects and the Stawell Underground Physics Lab (SUPL).

"Our Story of Gold" exhibition featured selected photographs from the Holtermann Collection, courtesy of the Stawell Historical Society, alongside Alasdair Niven's artworks inspired by Stawell Gold Mines, highlighting the historical significance and artistic interpretation of the gold mining heritage of Stawell.



Upper Main Street Stawell - Year: 1874 Glass plate negative
Holtermann Collection courtesy Stawell Historical Society



Great Northern Gold Mine - Year: 1874 Glass plate negative
Holtermann Collection courtesy Stawell Historical Society



DOWN THE MAIN II

Alasdair Niven

NEXT
COMMUNITY POP IN
INFORMATION SESSION
February 24 - 28
9.00am to 4.00pm daily
Shop 108
Main Street Stawell

SGM in the Community

Stawell Show

Stawell Gold Mines was thrilled to be involved with this wonderful community event, continuing our long-standing partnership with the Stawell Agricultural Show.

We showcased our brand-new underground Simba production drill rig and surface water truck, providing a great opportunity for the community to better understand the gold mining industry and the chance to jump into the driver's seat of the Simba and learn about how these powerful underground machines operate.

It was great to see many families trying their hand panning for real gold and the kids having a blast entering the colouring-in competition, with the chance to win fantastic Lego prizes.



Panning for gold



ON DISPLAY - Underground Simba production drill rig and surface water truck

Surface water truck

The introduction of the surface water truck significantly bolsters the SGM's ongoing dust mitigation measures, the vehicle is equipped with advanced features, in addition to traditional spray nozzles that distribute water across large areas, the truck is also outfitted with a remotely operated water cannon.

This added layer of dust control enhances air quality and supports the overall health and safety of SGM workers and the surrounding community.



SGM in the Community

Community Grants

Stawell Gold Mines strives to be an active and supportive member of our local community. The Community Grants Program aims to enhance the overall social, educational, recreational, and environmental aspects for the local community by providing funding opportunities for local groups and organisations.

Congratulations to our 2024 grant recipients

June 2024 Grants

- **Stawell Urban Landcare:** Donation towards signage at the Stawell Apex Arboretum.
- **303 Army Cadet Unit Stawell:** Purchase of upgraded 2way UHF handheld radios.
- **Stawell Bowling Club:** Purchase of a replacement battery powered STIHL vacuum blower.
- **Stawell Inter Church Council Welfare Cottage:** Donation towards food and food vouchers for those in need.
- **Stawell Performance Arts Company:** GOLD sponsor of the 2024 musical production.
- **Stawell Pioneer Soccer Club:** Supply of first aid equipment.
- **Friends of Grampians Rail Trail:** Donation towards the construction of the final bridge.
- **St Patrick's Primary School Stawell:** Supporting the Breakfast Club program.
- **Marrang Kindergarten:** Donation towards the development of a vegetable garden space.



Stawell Community Gardens new electric mower to maintain garden areas.



Friends of Grampians Rail Trail: Donation towards the final bridge.



Stawell Inter Church Council Welfare Cottage: Donation towards food and food vouchers for those in need.

December 2024 Grants

- **Stawell Primary School:** Purchase of new sports uniforms.
- **St Matthew's Uniting Church:** Purchase of a defibrillator for the church.
- **Stawell Inter Church Council Welfare Cottage:** Donation towards food & food vouchers for those in need.
- **Stawell Secondary College:** Sponsorship of the High Achievement Awards – Excellence. Year 7, Year 8, Year 9 & Year 10.
- **Project Platypus:** Purchase of artificial intelligence (AI) camera technology to monitor the squirrel glider in the Northern Grampians.
- **Concongella Primary School:** Donation towards the Schools First Aid room developments.
- **Grampians Community Health:** Major Sponsor of the bi-annual over 40s football and netball charity match.
- **Stawell Community Gardens:** Purchase of a new electric mower to maintain garden areas.
- **Stawell Rifle Club:** Donation towards upgrades to the shooting mounds.
- **Navarre Football Netball Club:** Purchase of new junior football and netball training aids and equipment.

SGM Mining Community

Safety Awards

Celebrating Positive Safety Champions

The Stawell Gold Mines Safety Awards are designed to foster a strong safety culture and strengthen the sense of community within the workplace. These awards recognise and celebrate the efforts of employees who actively contribute to maintaining a safe working environment.

The Above and Beyond Safety Award

The Above and Beyond Safety Award is awarded to employees who have gone above and beyond their normal job duties to keep their workmates safe and who show Positive Safety Behaviour (PSB), nominations are submitted via a “Hazard Action Checklist” (HAC) by Managers, Superintendents, Supervisors and workmates. A total of 202 submissions were received for the Quarter highlighting the collective dedication to safety within Stawell Gold Mines.

Safety Contribution Draw

In addition to the Above and Beyond Safety Award, Stawell Gold Mines also celebrates safety contributions through the Safety Contribution Draw, where winners are randomly selected from all STEP BACK reports submitted during the past quarter. STEP BACK reports are a pre-job safety analysis checklist, ensuring all tasks are assessed for potential hazards before work begins.

Celebration of Safety Champions

To honor all the safety champions, SGM hosted guest speaker Steven Baker, a former AFL player with the St Kilda Football Club. Steven's speech was about grit - he provided valuable insights into overcoming challenges and developing mental toughness, a fitting message for all those committed to safety in the workplace.

Baker, who played 203 senior AFL games and won the club's Best and Fairest award in 2005, shared his experiences of resilience both on and off the football field.

This was part of our special Safety Awards BBQ that highlighted all the safety champions at Stawell Gold Mines. Through events like these, Stawell Gold Mines continues to demonstrate its dedication to a culture of safety, ensuring that every worker can return home safely at the end of each day.



SGM Mining Community

Epiroc Partnership

Epiroc and SGM: A Collaborative Research and Development Partnership

In early April, the Epiroc Research and Development Engineering team visited Stawell Gold Mines to continue their long-term international research and development partnership, which began in 2014. This ongoing collaboration between Epiroc and SGM has focused on refining various mining techniques, particularly in the areas of rock bolting, diamond drill bit performance, and the improvement of underground drilling equipment to enhance safety, productivity, and sustainability.

The partnership commenced in 2014, when Graeme Cox, a Jumbo operator at Stawell Gold Mines, visited Epiroc's headquarters in Sweden. This visit initiated a long-term relationship between the two organisations, aimed at advancing Australian bolting techniques and the continuous improvements in underground mining equipment, specifically in the methods used for bolting and ground support.

The Importance of Rock Bolting in Underground Mining

Bolting is a crucial safety process in underground mining, ensuring the stability of tunnels and shafts. This technique involves drilling holes into the walls or ceilings (known as the "backs") of a rock formation and installing "split set" or "rock bolts" to provide support and reduce the risk of rockfalls. The positioning, angle, and depth of each bolt are critical to its effectiveness in stabilising the rock mass.

In Australia, the underground jumbo is used in a multi-functional manner, serving as a scaling machine, a rock bolting rig, and a face drilling machine. This differs from practices in Sweden and other parts of the world, where three distinct machines are typically used for each phase of development: a scaling machine, a rock bolting rig, and a separate face drilling machine.

Collaboration Driving Innovation and Safety

Through the partnership, Epiroc and SGM have run trials and made valuable advancements in the technology used for rock bolting and underground drilling. These innovations aim to enhance the safety of mining operations, improve drilling productivity, and contribute to more sustainable mining practices.

The ongoing partnership between Epiroc and Stawell Gold Mines not only highlights the power of collaborative research but the importance of continuous innovation in ensuring a safer and more sustainable future for underground mining operations and improvements in both safety and operational efficiency.



SGM Mining Community

Mine Rescue Team

Emergency Response Teams from across Victoria, New South Wales, and Tasmania gathered in Bendigo for the 2024 Minerals Council Victorian Mine Rescue Competition (VMRC), held from August 23-25.

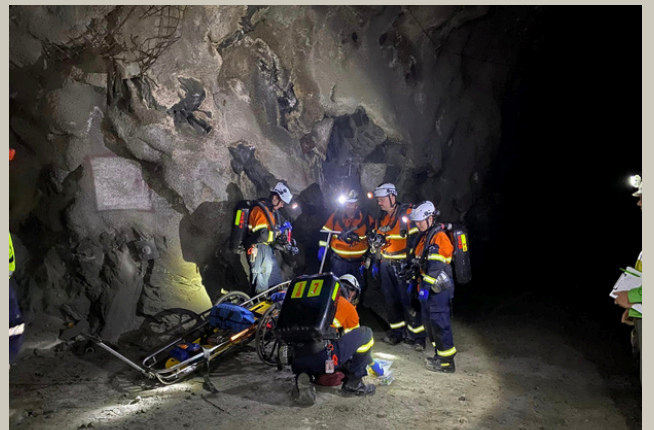
Congratulations to our Stawell Gold Mines Emergency Response team the "Blue Healers" for their competition performance, being awarded the "most improved team", placing third in the Fire and First Aid categories, and fourth in the overall scoring!

The Emergency Response Team is a critical component of the operations at Stawell Gold Mines, the team is made up of volunteers from various departments across the SGM operation. They are a highly trained team of rescue personnel prepared for mine site emergencies. The Mine Rescue Competition provides further opportunities to strengthen the team's skills by performing training exercise involving simulated rescue scenarios.

The success of the Blue Healers at this year's event reflects their dedication and hard work in maintaining the highest standards of emergency preparedness at Stawell Gold Mines.



2024 Mine Rescue Competition SGM Team



2024 Mine Rescue Competition – SGM Team in an underground search & rescue simulated scenario



2024 Mine Rescue Competition – SGM Team rigging up rope system for a simulated rescue scenario

SGM Mining Community

Schools Programs

In 2024, Stawell Gold Mines hosted visits from Schools across the region as part of the Minerals Council of Australia (MCA) mining careers program, introducing secondary school students to career pathways and study opportunities in the mining sector.

Stawell Gold Mines offers a comprehensive on-site program introducing students to the diverse range of careers that make up an underground gold mining operation, highlight to young people in regional communities the number of different disciplines involved in mining and the wide range of opportunity for employment in the mining sector.

The SGM students program includes tours of our Diesel, Fitters and Electrical Trades workshops for an overview of apprenticeship opportunities and to observe the workshops daily operations. The students also had the opportunity to meet team members and participate in presentations from the Mining Operations, Mineral Processing, Environmental, Community and Geological teams and an insightful overview of Stawell Underground Physics Lab (SUPL) development.

Term 3: Marian Collage Ararat visit



Core Farm



Presentations

MCA mining careers program 2024 Schools

- **Term 1:** Holy Trinity Lutheran College, Horsham
- **Term 2:** Highview College, Maryborough
- **Term 3:** Marian Collage, Ararat
- **Term 4:** Combined schools group, St Arnaud Secondary College, Charlton Collage & Donald High School



The Mill 8

SGM Mining Community

SUPL Update

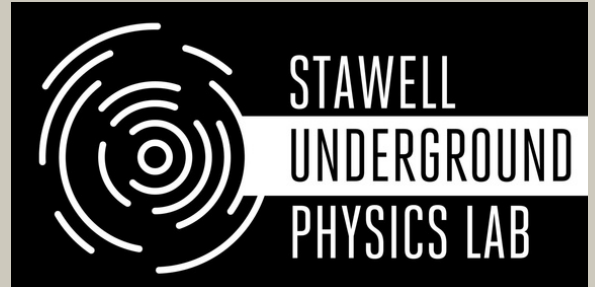
Enabling Tourism Grant

We are delighted to announce that Stawell Underground Physics Laboratory (SUPL) is the recipient of an Enabling Tourism Grant from the Victorian Government.

The grant will enable us to undertake a comprehensive feasibility study to establish a state-of-the-art Science Outreach Centre in Stawell, styled as the Dark Matter Experience Centre (DMEC) that promises to attract new visitors to the region supporting local business and accommodation providers.

This places Stawell on track to become an innovative and inspirational centre for scientific research and educational outreach, bringing together a world-class underground research facility and a state-of-the-art Science, Technology, Engineering, Arts and Mathematics (STEAM) outreach centre.

Special thanks to Stawell Gold Mines, Northern Grampians Shire. The University of Melbourne and Swinburne University of Technology for their support of the SUPL application.



102 THINGS TO DO WITH A HOLE IN THE GROUND



The Stawell Underground Physics Laboratory were thrilled to be included in the second edition of this book by The Eden Project, which promotes the idea that beneficial uses can be derived from repurposed mines and infrastructure.



Mine Developments

Blasting Activity

Stawell Gold Mines continues full scale gold production, with underground development and production blasting continuing in several areas of the mine.

UNDERGROUND WORKINGS

The Blasting Locations Map shows in green the approximate areas where production and development blasting will occur over the coming months with the current blast monitoring network highlighted in yellow.

TYPICAL FIRING TIMES

Development firing

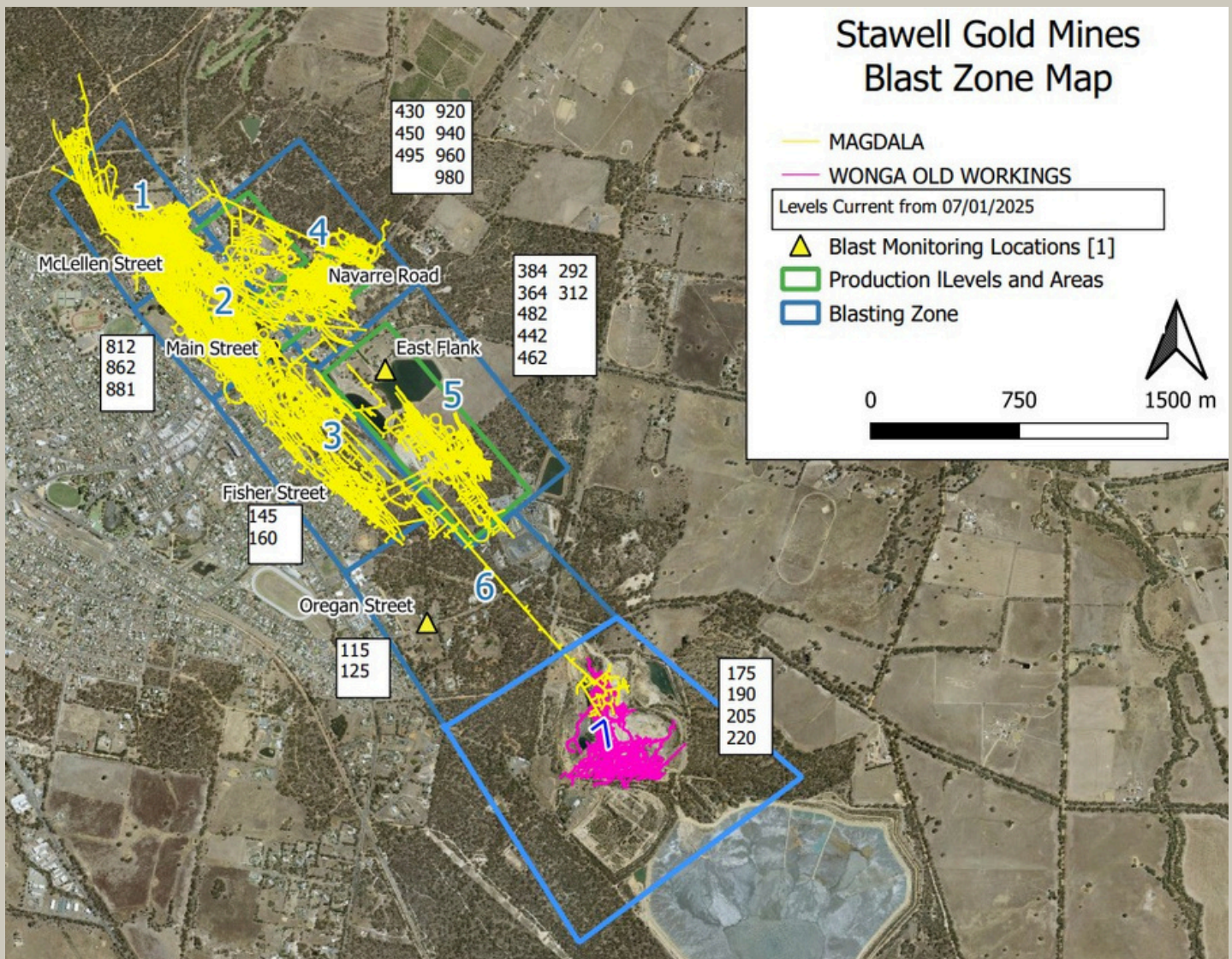
7 days a week

5:30 to 6:30 am/pm

Stope (Production) firing

7 days a week

5:30 to 6:30 am/pm



Connecting with SGM

Blast Notifications



SGM offers a blast notification text message system when production blasts will occur with the date, approximate time, and the location (zone on map) of the firing. Any resident who would like to be included in the blast notification text message system is encouraged to contact Stawell Gold Mines.



Connecting with SGM



PO Box 265, STAWELL VIC 3380



enquiries@stawellgoldmines.com



stawellgoldminescommunityhub.com.au



03 5358 1022



[@stawellgoldmines](https://www.facebook.com/stawellgoldmines)



[@stawellgoldmines](https://www.linkedin.com/company/stawellgoldmines)

OBSERVATION DECK



DISCOVER THE FASCINATING WORLD INTO THE WORKINGS OF AN UNDERGROUND GOLD MINING OPERATION.

THE OBSERVATION DECK OFFERS A UNIQUE INSIGHT INTO THE EXPANSIVE SURFACE AREA PRODUCTION AND PROCESSING OPERATIONS AND THE UNDERGROUND PORTAL.

THE UNDERGROUND PORTAL

PEER INTO THE ENTRANCE OF THE MINE, IF YOU'RE LUCKY, YOU'LL BE ABLE TO SEE ONE OF THE HUGE MINE VEHICLES DESCENDING INTO OR EMERGING FROM THE NETWORK OF UNDERGROUND TUNNELS.



43 REEFS ROAD