

June 2022

MINES

Stawell Gold Mines' Newsletter

Community Grants Awarded

Stawell Gold Mines operates a Community Grants Program recently awarded community grants to 12 organisations from Stawell and the surrounding district in the fields of education, culture, social wellbeing, welfare, emergency services and recreation.

The community grants program provides support to individuals or community groups for projects that deliver broad community benefits.

The December 2021 community grants were awarded to the following community organisations and their projects:

- **Stawell Historical Society:** digitising local newspaper microfilms dating back to July 1868, preserving them for future generations.
- **Stawell Youth Cricket Club:** a box of cricket balls to reduce costs to players and increase accessibility.
- **Stawell Inter-church Council Welfare:** grocery shopping vouchers for those in need in Stawell.
- **Stawell Bowling Club:** replacement of ageing defibrillator in club house.
- **Riding for the Disabled—Stawell:** materials and labour to construct steel holding yards for horses.
- **Stawell Primary School:** new defibrillator for the 300 students, 28 staff, parents and visitors safety.
- **Pomonal Primary School:** funding towards the construction of an undercover outdoor learning area.
- **Stawell West Primary School:** funding towards the Hands On Learning program that caters for the different ways people learn. This improves retention rates and rates of employment post school.
- **Grampians Giants All Abilities Football Club:** funding towards new uniforms for the Grampians Giants.
- **Pinnacle Inc.:** repair and fresh paint of the Greenfingers participant lunchroom and meeting area.
- **Stawell Country Fire Authority:** upgrading current signage with electronic variable message board for improved communication with the community.
- **Stawell Railway Station Gallery:** security cameras for the gallery.

The June 2022 community grants were awarded to the following community organisations and their projects:

- **Pinnacle Services Inc.:** repair of washed-out driveway to improve safety and mobility access.
- **Stawell Primary School 502:** Funding towards decodable books to assist beginning or struggling readers.
- **Stawell West Primary:** funding towards lighting for an outdoor classroom.
- **Landsborough District Senior Citizens Group:** travel for the group to attend an exhibition in Bendigo.
- **Stawell Golf Club:** portable marquees to provide shade and shelter for golf events throughout the year.
- **Stawell Tennis Club:** funding towards table tennis tables for winter table tennis competition and inclement weather days.
- **Stawell Inter Church Council Welfare:** purchase of an air purifier at their welfare cottage to assist in preventing COVID transmission on premises.

Congratulations to all successful candidates! For more information visit our website or Facebook page.

Mines rescue

Stawell Goldmines Emergency Response Team (ERT) are constantly refining and practicing rescue skills that aid in mine safety through a varied range of activities.

Currently the ERT deal with several emergency situations including vehicle rescue, underground and surface fire, underground and surface search and rescue.

It's great to see a highly trained and specialized team supporting the mine in emergency situations.



Above: SGM ERT fire response training.



Above Left/Right: Underground rescue training drill in conjunction with Ballarat Gold Mines.

The SGM ERT is currently training in preparation for the Victorian Mine Rescue Competition (VMRC) which will be held at Fosterville Gold Mine (Bendigo) in November of this year.

The VMRC has been running since 1993 and sees mine rescue and emergency response teams from mine sites around Victoria and Australia compete against each other in a variety of simulated emergency situations to put their skills to the test, and share their extensive knowledge with each other. The VMRC attracts teams from all over Australia and is a highly regarded national event.

Stawell Underground Physics Laboratory (SUPL)

The excavation and construction of SUPL is now complete. For further information on SUPL, refer to their website at www.supl.org.au.

Upcoming Blasting Locations and Processes

SGM continues full scale gold production, with underground development and production blasting continuing in a number of different areas in the mine in order to have sufficient gold bearing ore available for crushing and processing. The main areas of focus for production firings during the next 6 months will be in the Jaguar and Bengal orebodies that are located on the east flank in the new production areas – 243 RL, 263RL, 283 RL, 385 RL, 410 RL, 425 RL, 443 RL, 445 RL, 456 RL, 465 RL, 485 RL, 529 RL, and 549 RL. The Blasting Locations Map (next page) shows in green the approximate areas where production blasting will occur over the coming months with the current blast monitoring network highlighted in yellow.

SGM offers a blast notification text message system when production blasts will occur with the date, approximate time, and the location of the firing. Any resident who would like to be included in the blast notification text message system is encouraged to contact Stawell Gold Mines on 03 5358 1022 or enquiries@stawellgoldmines.com.

Stawell Gold Mines also publishes material including Fact Sheets to help with your understanding of the blasting processes, controls and monitoring in place to protect structures and amenity. A Blasting and Vibration Fact Sheet, which details additional information and responses to some frequently asked questions relating to blasting activity, can be found on our Community Hub website at stawellgoldminescommunityhub.com.au/ or by visiting our Facebook page facebook.com/stawellgoldmines/

Victorian Women in Resources Awards

Stawell Gold Mines’ Melanie Richards was one of the recipients of the Victorian Women in Resources Awards 2022. Mel received a Highly Commended Award in the category of Exceptional Young Women in Victorian Resources.

This category is open to women under 30 and recognises an outstanding young woman who has shown significant promise and achieved significant milestones in her career to date. It also recognises her contribution to promoting the Victorian resources industry’s reputation and standing in the community and increasing inclusion and diversity in the sector.



Above: Melanie Richards (left) with the Minister for Resources Jaala Pulford (right)

CONTACT US

Stawell Gold Mines

PO Box 265, Stawell VIC 3380

Phone 03 5358 1022

Facsimile 03 5358 3454

Email enquiries@stawellgoldmines.com

Website stawellgoldminescommunityhub.com.au

Facebook facebook.com/stawellgoldmines

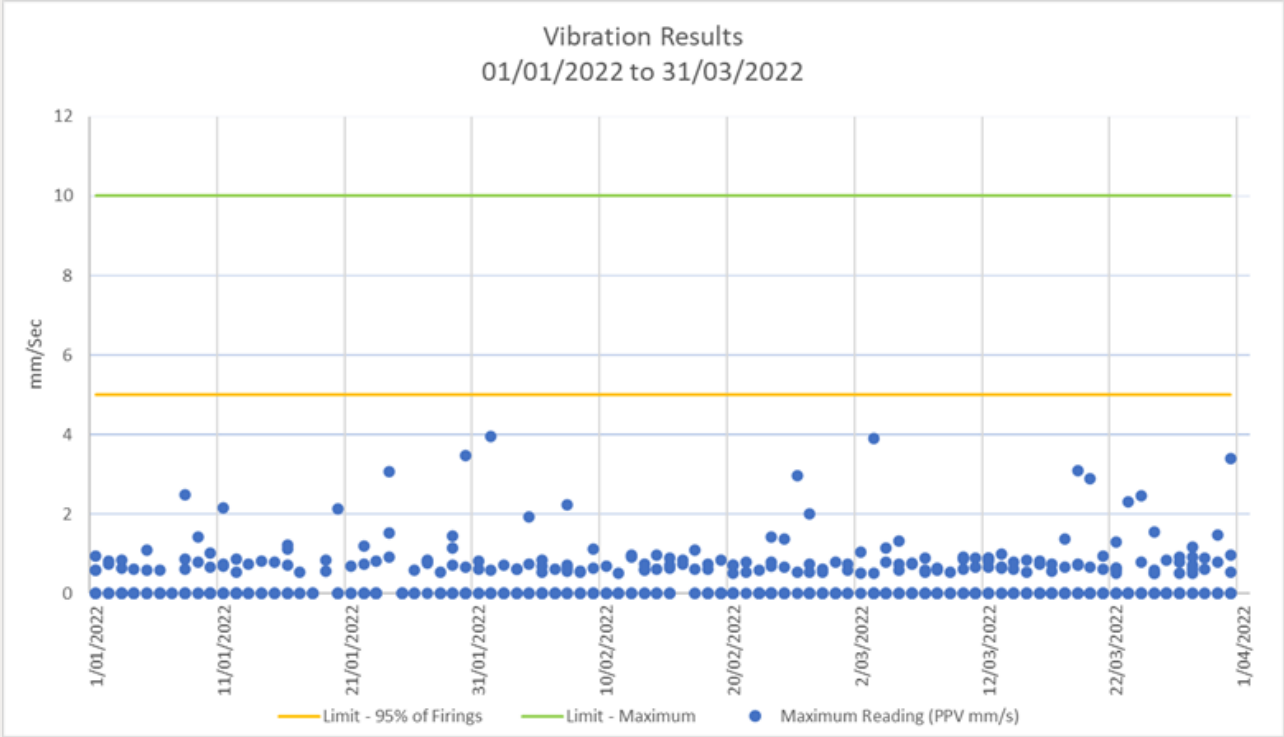


Vibration Results: January to March 2022

SGM undertook a total of 516 firings from January to March 2022 with 38 production stopes and 472 development firings. The firings during this period were located on the East Flank and West Flanks between 243 RL, and 549 RL. All firings complied with the mining licence limits for surface vibration which are:

- No firings to exceed 10 mm/s at any time; and
- 95% of firing must be less than 5 mm/s within a 12-month period.

Individual results from each of these firings can be seen in the below graph.



Above: Stawell Gold Mines vibration monitor results for January to March 2022

Davis Pit Rehabilitation

After being delayed due to COVID, rehabilitation of the Davis is full steam ahead! Backfilling with inert waste rock from the underground mine is now complete. The rock has been shaped to the final closure design that will match the surrounding slopes of Big Hill. Placement and shaping of subsoil and topsoil is now approximately 50% complete. The next phase of rehabilitation will involve soil conditioning and planting of native vegetation endemic to the region. This vegetation will one day provide habitat with a food source for native animals.

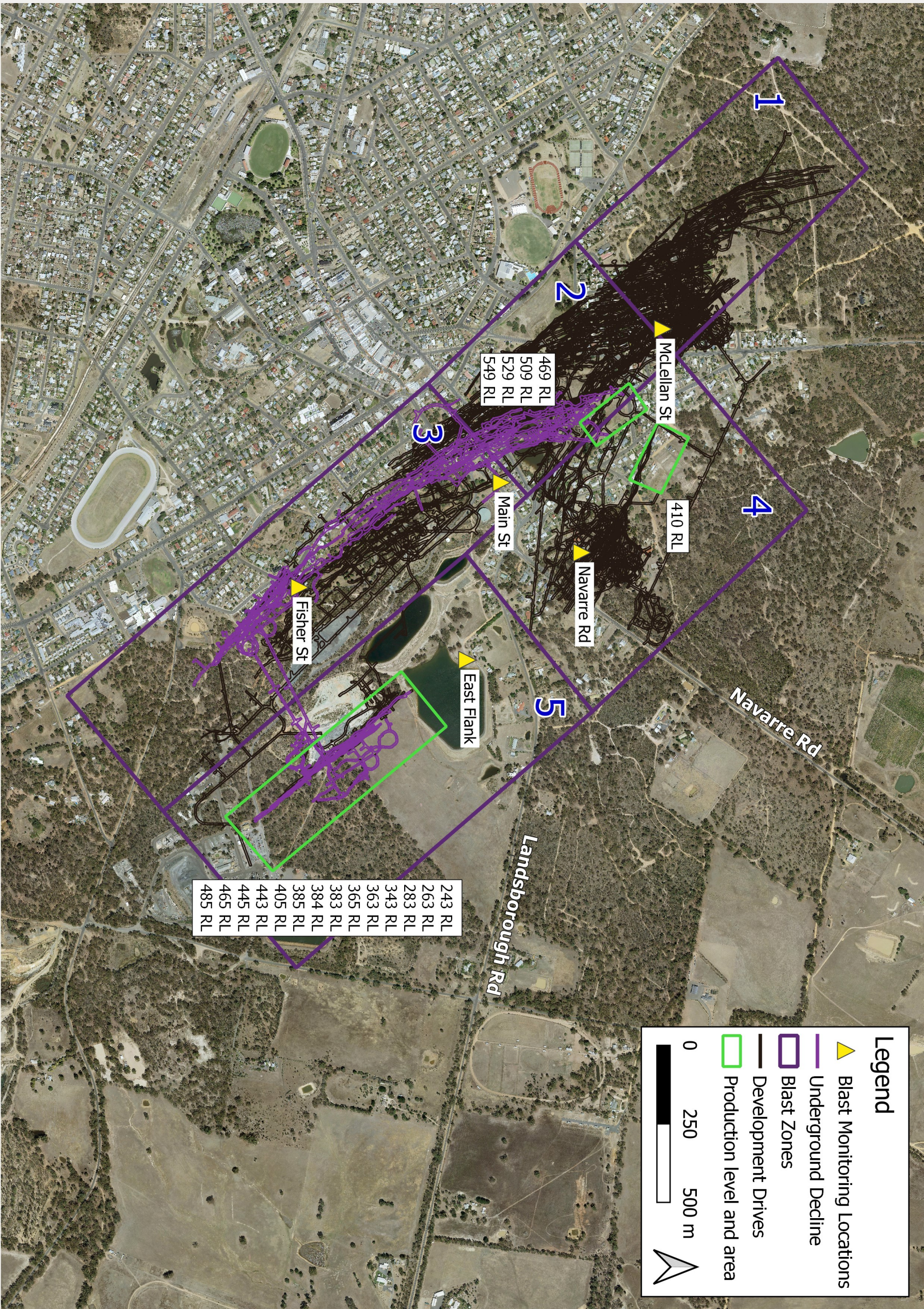
This is undertaken as part of Stawell Gold Mines’ long term commitment to rehabilitating the pit and blending into the natural surrounding landscape. The final design takes into account the hydrology, run off and vegetation required.



Left: Davis Pit Rehabilitation works— prior to placement of subsoil. Visible is the completed backfilling with inert underground waste rock.



Left: Davis Pit Rehabilitation works during placement of subsoil.



Above: Blasting Locations